

**Ability Guidebooks  
presents  
Explore London!**



# **I Am Going To The New Tate Modern!**

**A Step-by-Step Guide On How To Visit This Amazing Museum**

**by  
Brett Bigham**

**Tate Modern is a great place to visit. The main doors are under the big orange signs.**



**This is the main entrance for Tate Modern. It is at the base of the tall tower. This building used to be a power station. Now it is one of the world's most famous museums!**

**Here is one of the doors at the base of the tall tower.**



**There are some rules about visiting Tate Modern. You have to walk when you are inside the building.**

**After you go inside, cross the lobby and take the stairs, elevator or escalator down one floor. The coat check, bathroom and information desks are downstairs.**



**There are several map stations in the lobby. You can buy a map for one pound. Put your money in the slot and take a map!**



**The maps can help you find your way to the different floors and exhibits.**

**It is free to visit Tate Modern but they also have special exhibits. You have to buy a ticket for the special exhibits. When you buy a ticket they will give you a map to the special exhibit.**



**Even if you do not buy a ticket to the special exhibit, there is plenty of art in their permanent collection to see.**

**Here are the Switch House elevators! There is a map printed on the wall right next to the elevators.**



**It shows Tate Modern has two main towers with bridges connecting them.**

**This man is going to up in the elevator to a higher floor and then he is going to work his way down to main lobby.**





**Each floor has different galleries. Because Tate Modern is so large there are many places to sit and rest. This family relaxed before they went to the next room.**



**Now let's look at some art!**

# This room has a robot sculpture!



**Notice the rope around the sculptures? Do not cross the rope. The rope is there to make sure people don't get too close to the art. Please don't touch the art at Tate Modern!**

**This a famous spider sculpture! It is OK to go underneath the spider. Just be careful and don't touch the legs.**



**Don't worry! It is not a real spider!  
Sometimes modern art is surprising!**

**There is a bridge between the Boiler House and the Switch Room on the 4th floor. You can cross this to get to the other building to see more art.**



**You can look over the railing. This man is walking in the center so he feels safer.**

# I wonder what piece of art will be your favorite? Here are some of the paintings you will see at Tate Modern.



Sonia Delaunay-Triptych 1963

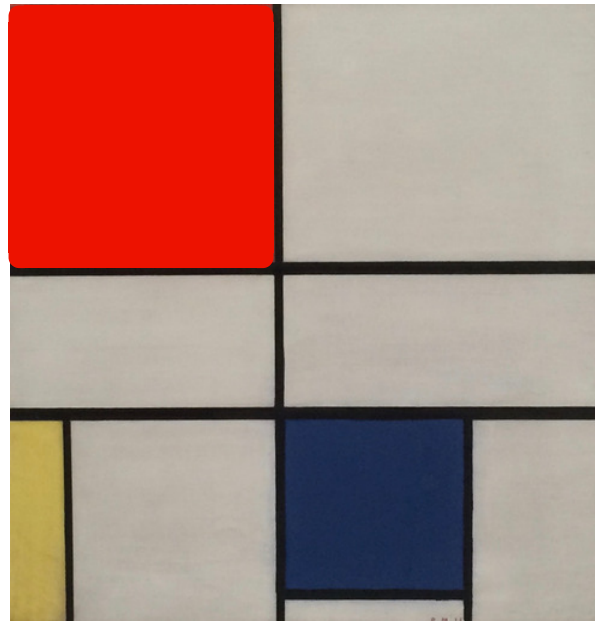


Andy Warhol-Marilyn Diptych 1962

Fernando Léger-The Acrobat and his Partner 1948



Piet Mondrian-Composition C (No.III) with Red, Yellow and Blue 1935



Picasso-Bust of a Woman 1944



**This painting of water-lilies by Claude Monet is one of the most famous paintings at Tate Modern. It takes up an entire wall!**



**Claude Monet -Water-Lilies after 1916**

**These two are enjoying Tate Modern. They are doing a great job following the rules. They stay behind the rope and they know not to goof off.**



**I'll bet their teacher is very proud of them!**

**Sometimes there are groups visiting the museum. This group is with a tour guide. It is her job to teach about the art. If you are with a group be a good audience!**



**If there is a group in front of a painting you want to look at, you might have to wait a few minutes!**



**This man started to feel a little tired so he sat down for a few minutes. He checked his messages but made sure his ringer was turned off.**



**If you need to make a phone call, go out into the lobby but remember to use a quiet voice!**

**To go between floors there are stairs, elevators and escalators. If you use the escalator, remember to hold the handrail!**



**These kids are doing a great job on the escalator!**

**This is a man made out of metal! He is behind a rope so don't get too close.**



**Antony Gormley-Untitled (for Francis) 1985!**

**You will see some really cool art at New Tate Modern.  
Remember not to touch the sculptures!**

**This man was having so much fun he didn't even see the fake spider on the wall! Don't be scared! Modern art can be very surprising!**



**Have fun at the Tate! I know you will have a great time!**

# **Tips For Visiting Tate Modern!**

**Tate Modern is free to see their permanent collection. The viewing level on the 10th floor of the Switch House is also free to visit. Special exhibits require visitors to purchase a ticket. The Tate Modern is a large museum. Consider visiting twice. Once for the art and once for the view. I have visited Tate Modern five times over 30 years and have never been disappointed. Don't visit London without visiting the Tate!**

**The Tate collection includes some of Modern Art's great masterpieces. Housed at the Tate are British works of art from 1900 forward as well as great pieces of contemporary and modern international art of the same era. With every visit you will view old favorites and find new favorites!**

**The viewing level has a great view of the city and is a fun outing! The floor just below houses the museum restaurant and there is a gift store in the lobby selling a wide variety of souvenirs and t-shirts.**

**Check the Tate Modern website for hours of operation and for information concerning purchasing tickets for special exhibits.**


**Tate Modern is free to enter but please consider leaving a donation in their collection boxes. Those donations help Tate stay modern!**

**The Millennium Bridge stretches across the Thames from the courtyard of New Tate Modern. St. Paul's Cathedral is only a few minutes walk across the river from the Tate. "I Am Going To St Paul's Cathedral!" is written from a start point at the base of the Millennium Bridge.**

**"I Am Going To The New Tate Modern Viewing Platform" is a separate book with instructions on visiting just the viewing platform. "I Am Going To The New Tate Modern" is a separate book with instructions just to view the art.**

**Ability Guidebooks are step-by-step instructions on how to access community destinations. For many people with autism and neuro-diversity, new situations can cause stress and discomfort. Ability Guidebooks help prepare people for new experiences. This is why I emphasize the places to sit and areas to relax.**

**This book will also help general ed teachers prepare their young students for a visit to Tate Modern.**



**Can You Translate?**  
**If you can translate this book into any other language  
I would love to hear from you!**

**Brett Bigham is the 2014 Oregon State Teacher of the Year and an NEA National Award for Teaching Excellence winner. Bigham is the first Oregon Special Education teacher to win these awards.**

**Bigham was named a Global Fellow by the NEA Foundation and traveled to Peru as an ambassador of that program. This allowed Bigham to create his first international Ability Guidebook for the Museo de Inka in Cusco, Peru. He has since made books for Greece, Italy, Croatia, Montenegro, Estonia, Finland, Latvia, the U.K. and Montenegro.**

**Text and Photos by Brett Bigham unless otherwise noted.**

**Thank you to the city of London and the staff of Tate Modern.  
Special thanks to Mike for giving up part of his weekend for proofreading.**

**Visit [MrBsClassroom.com](http://MrBsClassroom.com) for more Ability Guidebooks.**